

**BLACK HORSE PIKE REGIONAL SCHOOL DISTRICT**

450 Erial Road  
Blackwood, NJ 08012  
856-227-4106

**Highland Regional High School  
Counseling Office**  
856-227-4100 Ext. 4036/4037

**Timber Creek Regional High School  
Counseling Office**  
856-232-9703 Ext. 6052/6053

**Triton Regional High School  
Counseling Office**  
856-939-4500 Ext. 2021/2022

**Bellmawr Police Department**  
856-931-2121

**Gloucester Township Police  
Department**  
856-228-4500

**Runnemede Police Department**  
856-939-0330

**Camden County Department of  
Human Services**  
856-757-7285  
[www.camdencounty.com](http://www.camdencounty.com)

**NJ Department of Human Services**

[www.nj.gov/humanservices/dmhas/home/hotlines](http://www.nj.gov/humanservices/dmhas/home/hotlines)

**REACH NJ  
New Jersey's Addiction Helpline**

Call 1.844.ReachNJ  
(1.844.732.2465)

[www.reachnj.gov](http://www.reachnj.gov)

[www.nj211.org/addictions-hotline](http://www.nj211.org/addictions-hotline)



**BLACK HORSE PIKE  
REGIONAL SCHOOL DISTRICT**

WHERE INSPIRING EXCELLENCE IS OUR STANDARD  
AND STUDENT ACHIEVEMENT IS THE RESULT

**BLACK HORSE PIKE  
REGIONAL SCHOOL DISTRICT**



**COUNSELING  
REFERRAL SERVICES**

Teenagers are exposed to external and internal struggles which can impact student success. The Black Horse Pike Regional School District aims to provide all students with the knowledge, attitudes and skills to cope with these obstacles and develop a healthy lifestyle. Providing mental health support and referral to services is an integral part of our district's mission in promoting the well-being of each student. The district partners with a network of community services and agencies, creating a coordinated effort to promote a continuum of care and services for all students and families.

## THERAPISTS

**Michelle Alberti, PhD.**

Voorhees, NJ  
609-760-9977  
Adolescent Therapy

**Stephen Carroll**

Haddonfield, NJ  
856-795-0397  
Individual & Family

**Sandra Covelman, LCSW**

Voorhees, NJ  
856-783-7551  
Individual and Family

**Carann Feazill, LCSW**

Maple Shade, NJ  
856-155-0800  
Adolescent Counseling

**Allison Granite, LCSW**

Voorhees, NJ  
856-981-1753  
Adolescents/Family  
Girls/Stressful Life events

**Maryanne Hanzel, LMFT**

Sewell, NJ  
856-375-8188  
Family Counseling

### School Counseling Departments

Counselors, CST, SAC &  
MHAC are available during  
school wide common lunch.

Students can also submit a  
request to see their counselor,  
case manager, or SAC/MHAC  
electronically or in person.

**Hope Honeyman, LCSW**

Cherry Hill, NJ  
856-424-6887  
Depression/Anxiety  
Specializes in teen girls

**Dr. Karen Sczaniecka PhD.,  
LPC, LRC**

Vita Therapeutic Counseling  
Marlton, NJ  
856-452-1109

**Meghan A. Krouse, LCSW**

Marlton, NJ  
1-877-404-6078  
Anxiety/Depression

**Gary Kushner, EdD**

Cherry Hill, NJ  
856-424-6966  
ADHD/ODD  
Family Counseling

**Jay Lappin, LCSW**

Collingswood, NJ  
856-858-5346  
Individual & Family

**Bettina Lowe, LCSW**

Cherry Hill, NJ  
856-573-1198  
Grief Counseling

**Karla Morse**

Mindful Therapy Center  
Marlton, NJ  
609-353-5608  
Gender Dysphoria

**Ronna Palladino, LCSW**

Family & Psychological Services  
Cherry Hill, NJ  
856-424-4408  
Depression/Self Esteem/  
Individual & Family Therapy

## Notes

## THERAPISTS

**Igwe Paschal PhD, LPC**  
Moorestown, NJ  
856-380-1070  
Anxiety, School Anxiety

**Theresa Potts**  
Sewell, NJ  
856-831-7767  
Individual, Family and Grief Counseling

**Amanda G. Rodriguez, LPC, LCADC**  
Woolwich Township, NJ  
856-832-6753  
Mental Health/Substance Abuse

**Dr. Jocelyn Ross, PhD.**  
Cherry Hill, NJ  
856-424-1065  
Children and Adolescent

**Dr. Karen A. Saporito**  
Sewell, NJ  
856-278-6095  
Adolescent Mental Health Concerns,  
Autism Spectrum Disorders, ADHD

**Agent Alyssa Scolari**  
Blackwood, NJ  
856-842-5553  
GT Police Department  
Family Resource Center

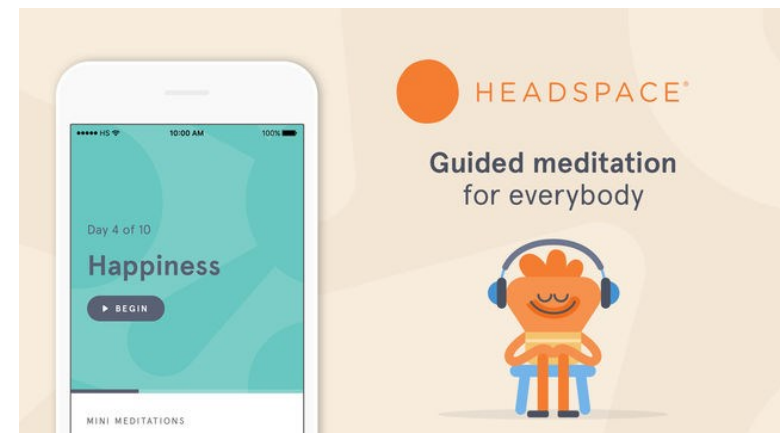
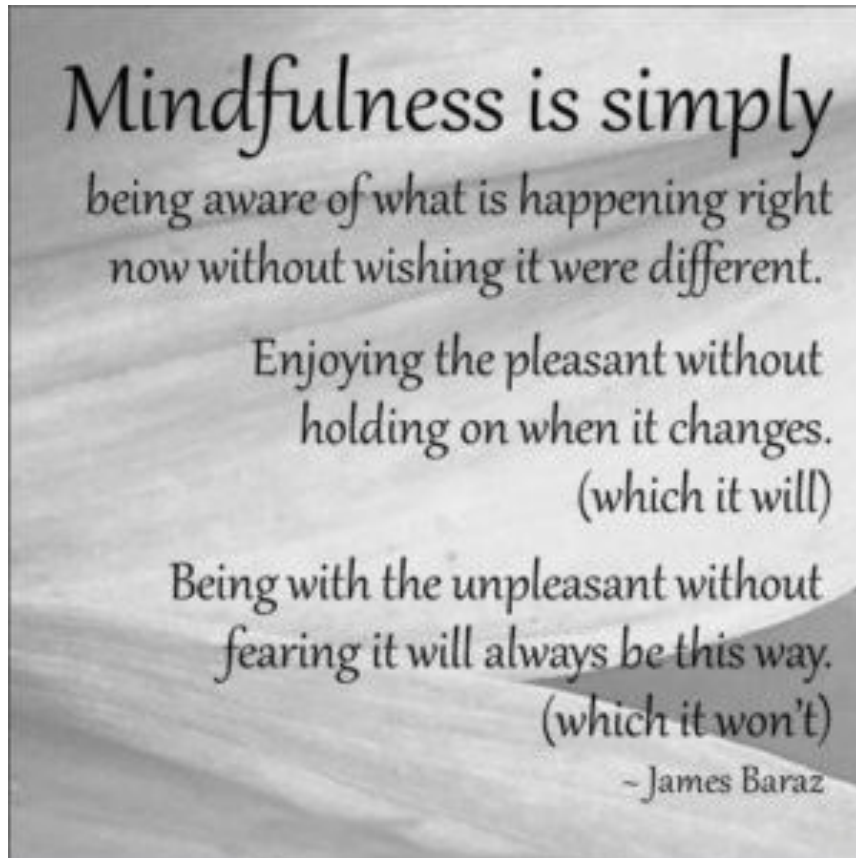
**Alyssa Scolari, MA, LAC**  
Blackwood, NJ  
856-335-3679  
Adolescents & Adults

**Shelly Stahl, LCSW**  
Haddonfield, NJ  
856-797-1370  
Adolescent and Family

**Renee Stemmer**  
Cherry Hill, NJ  
609-313-5346  
Adolescent Girl Group  
DBT Group

**Faith Tanner, LPC**  
Marlton, NJ  
856-797-4727  
Adolescent & Family

**Debra Waldman**  
Cherry Hill, NJ  
856-988-2939  
Adolescent & Family



## BEHAVIORAL & MENTAL HEALTH AGENCIES

### About Relationships

1405 Chews Landing Road  
Suite 21  
Laurel Springs, NJ  
856-352-2264

### Center for Children's Support

42 E. Laurel Road #1100  
Stratford, NJ  
856-566-7036  
Individual and family counseling  
for sexually abused children

### Center for Family Guidance

765 East Route 70  
Bldg. A-100  
Marlton, NJ  
856-797-4700

### Center for Family Guidance

Teletherapy  
800-442-8938  
Online video conferencing

### Center for Family Services

108 Somerdale Road  
Voorhees, NJ  
856-428-5688

### Child and Family Solutions

900 Rte. 168  
Wash. Professional Campus  
Suite D2  
Turnersville, NJ  
856-352-0054

### Dr. Robert Crawford

**Connections Counseling**  
44 Cooper Street  
Suite 102  
Woodbury, NJ  
www.connectionsnj.com  
856-845-4447

### Crisis Center

**Jefferson Cherry Hill**  
Emergency Department  
2201 Chapel Ave. West  
Cherry Hill, NJ  
856-428-4357

### Crisis Mobile Response

**PerformCare**  
1-877-652-7624 Press #2

### DCP&P

Dept. of Children  
Protection and Permanency  
(Formerly DYFS)  
1-877-NJ-ABUSE

### Fairmount Behavioral Health

561 Fairthorne Ave.  
Philadelphia, PA  
1-800-235-0200

### Hampton Behavioral Health

650 Rancocas Road  
Westhampton, NJ  
1-800-603-6767



**GET HELP NOW**  
WE'RE HERE FOR YOU  
**TEXT "START" TO 741-741**  
FREE | 24/7 | CONFIDENTIAL

The Crisis Text Line is a nonprofit organization dedicated to helping those who need to talk about any serious problem at any time of day or night via text message. Anyone who feels that they are in crisis can text 741741 whenever they like to be instantly connected to a trained counselor.

MENTAL HEALTH CARES  
866-202-4357

SUICIDE PREVENTION HOPELINE  
855-654-6735

ADDICTIONS SERVICES  
844-276-2777

DOMESTIC VIOLENCE HOTLINE  
800-572-SAFE

PERFORM CARE CRISIS MOBILE RESPONSE  
877-652-7624

## PSYCHIATRISTS

### **Center for Family Guidance**

765 East Route 70  
Bldg. A-100  
Marlton, NJ  
856-797-4700

### **Dr. Elizabeth Burns**

#### **Caring Psychiatry**

104 Independence Blvd.  
Sicklerville, NJ  
856-885-4529

### **Dr. Jo-Ann Cannon**

4551 Route 42  
Turnersville, NJ  
856-728-7626

### **Dr. Heidi Cooperstein**

Moorestown, NJ  
856-231-0690

### **Dr. Peggy Harbison**

#### **Centra**

5000 Sagemore Dr  
Suite 205  
Marlton, NJ 08053  
(856) 282-1649 Ext. 3015

### **Dr. James Hewitt**

442 Warwick Road  
Lawnside, NJ  
856-547-1166

### **Dr. Helen Rosen**

44 Cooper Street  
Suite 209  
Woodbury, NJ  
856-853-0222  
Variety of mental health issues

### **Dr. Michael Shore**

1500 N. Kings Highway  
Suite 106  
Cherry Hill, NJ  
856-428-8190

Substance abuse counseling

### **Dr. Alexander Strauss**

#### **Centra**

5000 Sagemore Drive  
Suite 205  
Marlton, NJ  
856-983-3866, Ext. 3004

## BEHAVIORAL & MENTAL HEALTH AGENCIES

### **High Focus Center**

53 Haddonfield Rd.  
Suite 330  
Cherry Hill, NJ  
1-800-877-FOCUS

### **Inspira**

509 N. Broad Street  
Woodbury, NJ  
856-845-0100

### **Oaks Integrated**

*Administrative Office*  
Oaks Integrated Care  
770 Woodlane Road  
Mount Holly, NJ  
609-267-5928  
Fax: 609-267-2318  
*Access Center - 800-963-3377*

### **Princeton House**

351 New Albany Road  
Moorestown, NJ  
1-888-437-1610

### **The Renfrew Center**

*Residential Program*  
475 Spring Lane  
Philadelphia, PA  
*Outpatient Treatment*  
15000 Midlantic Drive  
Suite 101  
Mt. Laurel, NJ  
1-800-RENFREW

### **Samaritan Center for Grief Support**

5 Eves Drive  
Suite 300  
Marlton, NJ  
1-800-596-8550

### **SERV**

Services Empowering  
Rape Victims  
24/7 Hotline  
1-866-295-7378

### **Starting Point**

215 Highland Ave.  
Suite C  
Haddon Twp., NJ  
856-854-3155



## SUBSTANCE ABUSE THERAPISTS/AGENCIES

### *OUTPATIENT PROGRAMS*

#### **CASTLE**

100 Townsend Ave.  
Berlin, NJ 08009  
856-322-3270

#### **Center for Family Guidance**

765 East Route 70 Bldg. A-100  
Marlton, NJ  
856-797-4700

#### **Center for Family Services**

601 Black Horse Pike  
Williamstown, NJ  
856-728-0404

#### **Child and Family Solutions**

900 Rte. 168 Suite D2  
Turnersville, NJ  
856-352-0054

#### **Genesis Counseling**

566 Haddon Avenue  
Collingswood, NJ  
856-858-9314

#### **High Focus Center**

53 Haddonfield Rd. Suite 330  
Cherry Hill, NJ  
1-800-877-FOCUS

#### **Horizon Counseling**

Dr. Doug Crawford  
408 S. White Horse Pike  
Audubon, NJ  
856-547-6700

#### **NewPoint Behavioral Health**

200 Hollydell Drive  
Sewell, NJ 08080  
856-848-8054  
<http://newpointbhc.org/programs/>

#### **Jefferson Behavioral Health**

Turnersville  
856-582-1419  
Cherry Hill, NJ  
856-488-6789

#### **Lang Recovery Counseling**

Dr. Jeffrey Lang, PhD., LCADC  
304 Newton Avenue  
Oaklyn, NJ 08107  
609-980-3514

#### **O'Leary Counseling**

Lori O'Leary  
630 Clements Bridge Rd.  
Barrington, NJ  
856-547-1107

#### **Princeton House**

351 New Albany Road  
Moorestown, NJ  
1-888-437-1610

#### **SODAT Camden County**

530 Cooper Street  
Camden, NJ  
856-964-5000  
Gloucester County  
124 N. Broad Street  
Woodbury, NJ  
856-845-6363

#### **Starting Point**

215 Highland Ave. Suite C  
Haddon Twp., NJ  
856-854-3155

## SUBSTANCE ABUSE THERAPISTS/AGENCIES

### *INPATIENT PROGRAMS*

#### **Behavioral Crossroads**

509 Rt. 168  
Ste. B  
Turnersville, NJ  
(855) 679-5138

#### **Daytop**

*Administrative Office*  
360 Mount Kemble Ave  
Morristown, NJ 07960  
862-260-9460

#### **The Caron Foundation**

243 N. Galen Hall Road  
Wernersville, PA  
1-800-678-2332

#### **The Lighthouse**

5034 Atlantic Ave.  
Mays Landing, NJ  
609-625-4900  
1-800-852-8851

#### **Maryville**

18+ yrs. old  
1903 Grant Ave,  
Williamstown, NJ  
856-629-0244

#### **New Hope Foundation**

80 Conover Road  
Marlboro, NJ  
1-732-946-3030

#### **Pyramid Healthcare**

Many locations in the  
Eastern Pennsylvania area  
1-888-694-9996



### **S.T.O.P. Program**

#### **Students Taking an Opposite Path**

The S.T.O.P program is a therapeutic/counseling program for parents and students. Certified counselors trained in addictions from the Center of Family Guidance meet with both parents and students in 5 week sessions. This early intervention program is initiated when a student has confirmed use of illegal substances, or at the request of a parent, and incurs no cost to the family. The goal of the program is to offer support to students and families at the onset of a drug problem.